



Ultimate Minifig Display System

USER GUIDE

Author - Steve Scott

Version 1.0

September 2023

Table of Contents

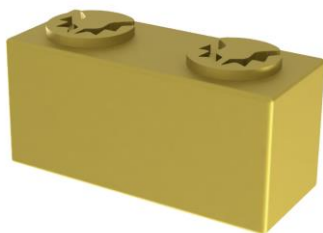
House notes	1
Positioning the MidPoint sticker.....	2
Positioning the paper BackDrop on the metal BackPlate	3
Setting out 3 rows of MagMounts	4
Row 1 of 3 – setting out 4 columns of MagMounts	5
Row 2 of 3 – setting out 6 columns of MagMounts	6
Row 3 of 3 – setting out 3 or 7 columns of MagMounts	8
Setting out 5 columns of MagMounts	10
Mounting your display into the IKEA Sannahed Frame	12

House notes

If for any reason the metal **BackPlate** gets wet, be sure to dry it immediately as it will rust if left exposed to moisture for an extended period.

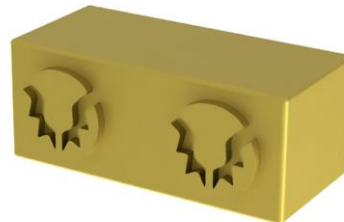
When using the golden **PowerMags**, maximum grip strength is achieved when the thistles are on the top surface. To make removal easier, rotate the golden **PowerMag** by 90° forwards or backwards (thistles to front or back) to reduce the grip strength to medium.

Thistles on **top** face



Maximum grip strength

Thistles on **front** face

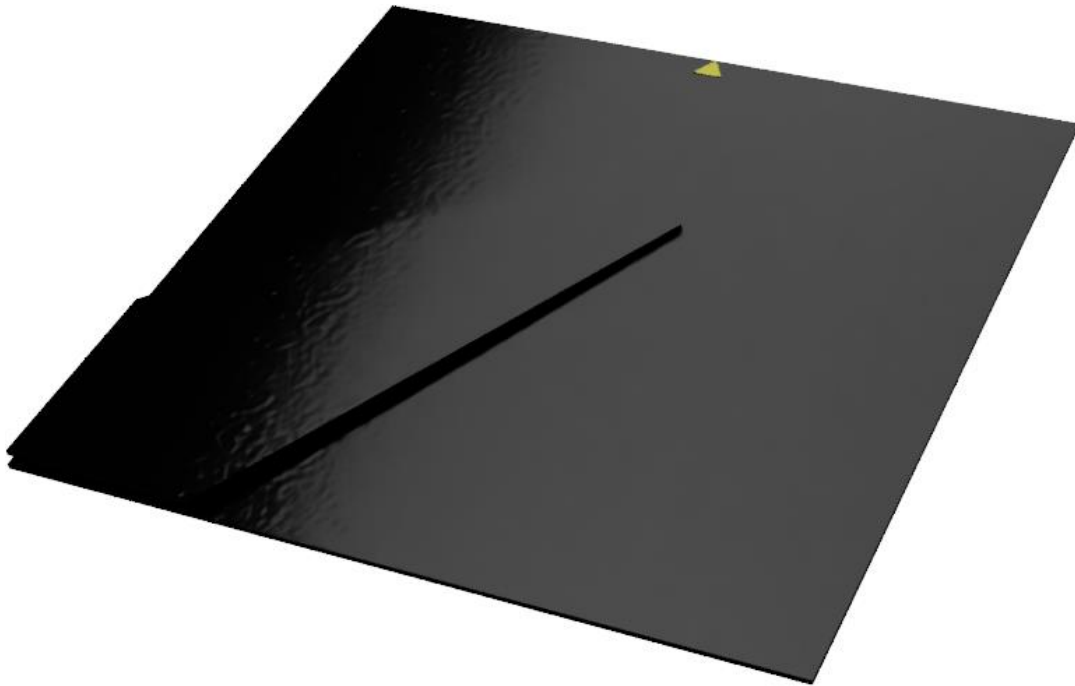


Medium grip strength

When both golden **PowerMags** are attached to the metal **BackPlate** (with thistles on top face), the combined grip strength is sufficient to lift the metal **BackPlate** out of the IKEA Sannahed frame.

Positioning the MidPoint sticker

MagMount column positions are set out from the centre line of the IKEA Sannahed frame, so we need a way to mark this position. Since the IKEA backboard is 250mm wide, all we need to do is apply the triangular yellow **MidPoint** sticker at the halfway point along the top edge of the backboard.



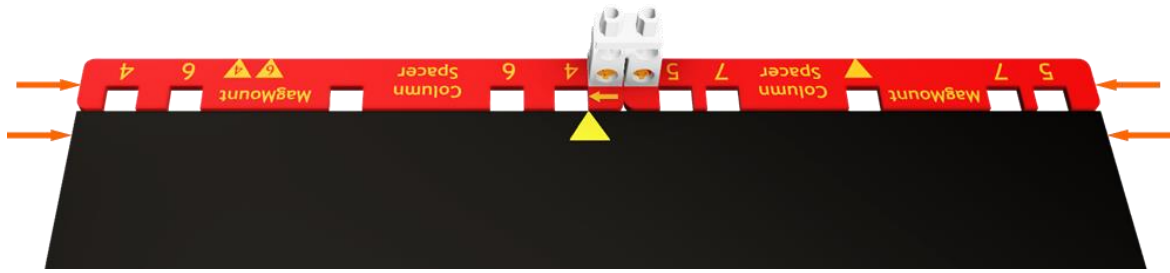
To do this, start by locating the two **ColumnSpacer** rulers then place them side by side so that the studs are aligned as shown below:



Connect the **ColumnSpacer** rulers together by attaching minifig legs or for a more rigid connection, a 1x2 LEGO® brick if you have one to hand.



Turn the connected **ColumnSpacer** rulers around by 180° and place them along the top edge of the IKEA backboard. Ensure that the right hand and left hand edges of the IKEA backboard and the ends of the connected **ColumnSpacer** rulers are in line with each other.



Once everything is lined up correctly, apply the triangular yellow **MidPoint** sticker so that it aligns with the small arrow on the 4/6 **ColumnSpacer** ruler as shown above.

The IKEA backboard is now ready for use, so you can separate the **ColumnSpacer** rulers.

Positioning the paper **BackDrop** on the metal **BackPlate**

Take care when handling the metal **BackPlate** as the edges may be sharp.

Place the metal **BackPlate** on a clean, dry work surface.

Next, lay the paper **BackDrop** on top and you'll notice that it is slightly larger than the metal **BackPlate**. This is by design (it's a long story!), so don't worry about it.

Position the paper **BackDrop** more or less centrally on the metal **BackPlate** from left to right, but take care to line up the bottom edge of the paper **BackDrop** with the bottom edge of the metal **BackPlate** so that it doesn't overhang, like it does at the sides. This is important for when you mount the display back into the IKEA Sannahed frame ([Page 12](#)).

To hold the paper **BackDrop** in this position, temporarily place the two golden **PowerMags** on it near the top, so that they don't obstruct your first row of **MagMounts**.

Next, position the LHS & RHS **RowSpacers** according to the blue alignment arrows printed on the **RowSpacers**. They should be placed on top of the paper **BackDrop** and anchored with **MagMounts** (until the last row is being set out, when they'll be needed). Refer to the illustration at the bottom of page 4 to see how it all looks when laid out correctly.

Once you have a few **MagMounts** positioned, they'll secure the paper **BackDrop** to the metal **BackPlate**, so you can remove the golden **PowerMags** at any point thereafter.

You're now ready to start positioning **MagMounts** on the paper **BackDrop**, so get your minifigures ready and decide how many rows and columns you want in your display.

Setting out 3 rows of MagMounts

Once you've decided how many columns you want for a particular row, select the correct **ColumnSpacer** ruler according to the table below:

Columns	ColumnSpacer to use	Notes
1		← Use the notch marked x
2		← Use the notches marked x
3		See page 7
4		See page 5
5		See page 10
6		See page 6
7		See page 7

In the illustration below, the IKEA backboard is in place, so we're ready to start setting out the columns. Align the IKEA backboard with the appropriate top row. Note the position of the golden **PowerMag** which is well above where the top row of **MagMounts** will be placed.

Tip: Always start your setting out with the topmost row (4.1, 3.1, or 2.1) and work downwards.

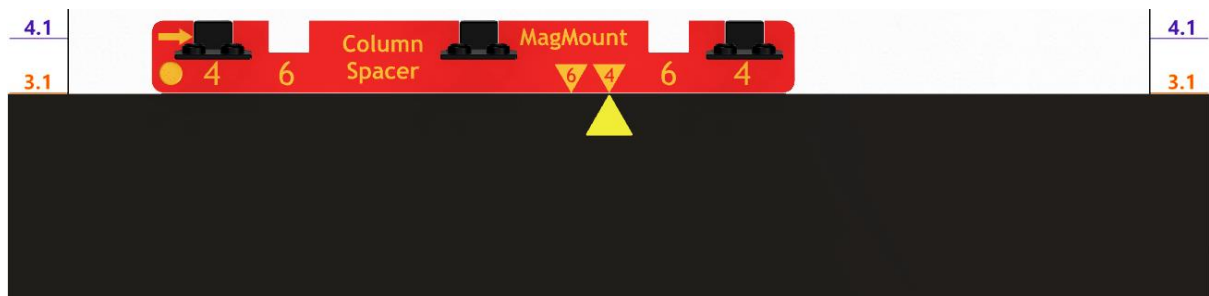


Row 1 of 3 – setting out 4 columns of MagMounts

Align the 4/6 **ColumnSpacer** ruler with the triangular yellow **MidPoint** sticker as shown below:



Notice that there are two centre alignment markers on the 4/6 **ColumnSpacer** ruler. The marker on the right is for setting out 4 columns, whilst the one on the left is for setting out 6 columns.



Tip: Attach your minifigs before positioning the MagMounts.

Place into position, the **MagMounts** for columns 1, 2 & 3, using the centre notch and the two notches marked 4. Remove the IKEA backboard before proceeding to next step.



Taking care not to disturb the **MagMounts**, reposition the **ColumnSpacer** ruler as above.



Position the **MagMount** for column 4, then carefully remove the **ColumnSpacer** ruler to complete the top row of 4 columns. Since the **MagMounts** are now holding the paper **BackDrop** to the metal **BackPlate**, you can safely remove the golden **PowerMag**.

Row 2 of 3 – setting out 6 columns of MagMounts

If you skipped straight to this page, you should first read pages 1 & 2 before proceeding.

Setting out a 6-column row follows the same procedure as a 4-column one but requires some additional **ColumnSpacer** ruler moves. In the instructions that follow, we'll set out 6 columns of **MagMounts** on the second of 3 rows.



Line up the IKEA backboard with the **RowSpacers** at the 3.2 mark, then align the 4/6 **ColumnSpacer** ruler with the yellow **MidPoint** sticker as shown above.



Tip: Attach your minifigs before positioning the MagMounts.

Place into position, the **MagMounts** for columns 2, 3 & 4, using the centre notch and the two notches marked 6. Remove the IKEA backboard before proceeding to next step.



Taking care not to disturb the **MagMounts**, reposition the **ColumnSpacer** ruler to the left as above.



Position the **MagMount** for column 1 in the left hand notch marked 6.



Taking care not to disturb the **MagMounts**, reposition the **ColumnSpacer** ruler to the right as shown above.



Position the **MagMount** for column 5 in the right hand notch marked 6.



Taking care not to disturb the **MagMounts**, reposition the **ColumnSpacer** ruler to the right as shown above.

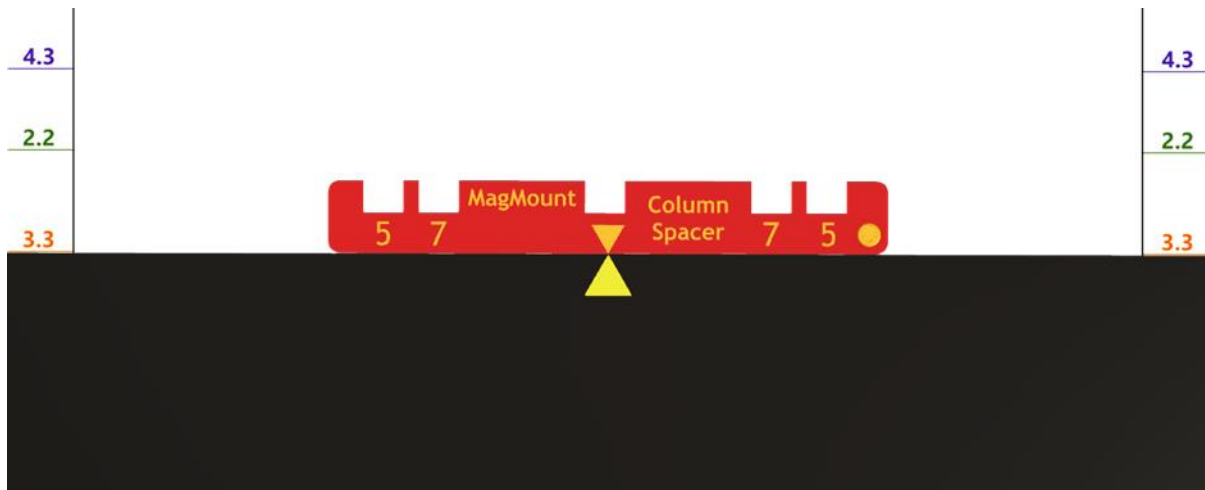


Position the **MagMount** for column 6 in the right hand notch marked 6, then carefully remove the **ColumnSpacer** ruler to complete the middle row of 6 columns.

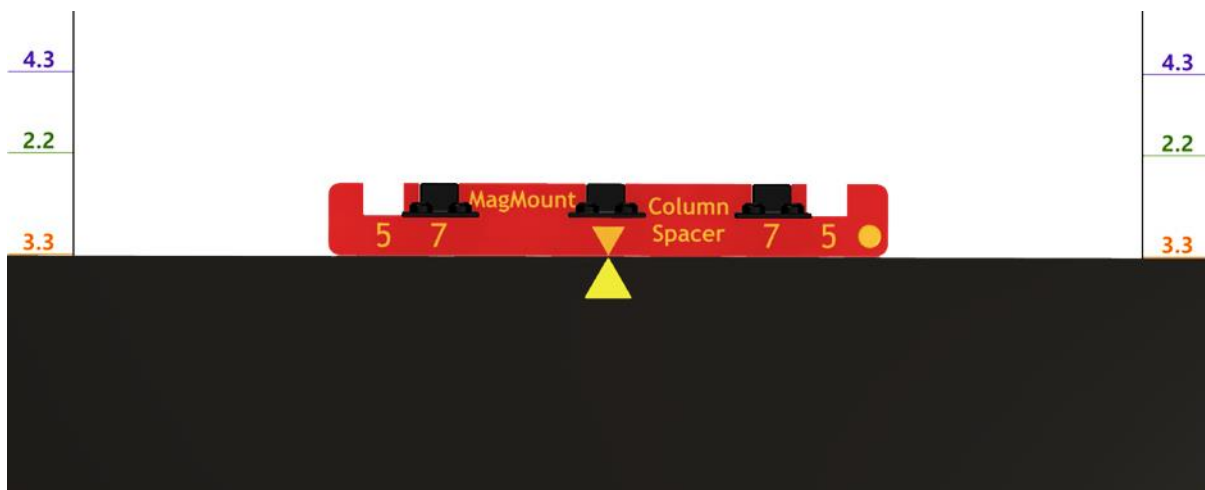
Row 3 of 3 – setting out 3 or 7 columns of MagMounts

To set out 3 equidistant columns, we need to use the 5/7 **ColumnSpacer** ruler to establish the positions for 7 columns. Then we can simply omit the **odd** numbered columns leaving the 3 **even** numbered ones ie: 1 2 3 4 5 6 7.

If you skipped straight to this page, you should first read pages 1 & 2 before positioning the IKEA backboard in line with the appropriate row on the **RowSpacer** measuring tapes.



Since there's only a need for one alignment triangle on the 5/7 **ColumnSpacer** ruler, go straight ahead and align it with the yellow **MidPoint** sticker.



Tip: Attach your minifigs before positioning the MagMounts.

Place into position, the **MagMounts** for columns 3, 4 & 5 (of 7), using the centre notch and (temporarily for a 3-column layout) the two notches marked 7. Remove the IKEA backboard before proceeding to next step.



Taking care not to disturb the **MagMounts**, reposition the **ColumnSpacer** ruler to the left (*'traverse left'*) as shown above.



For a 3-column layout, move the **MagMount** from the central notch to the left notch marked 7, leaving the central notch empty. Be extra careful not to displace the **ColumnSpacer** ruler while it's momentarily in contact with just one **MagMount**.

For a 7-column layout, you should leave the central notch **MagMount** where it is and place a fourth **MagMount** in the left notch marked 7, before repeating the *'traverse left'* procedure once more to locate the position for column 1 of 7.



Taking care not to disturb the **MagMounts**, reposition the **ColumnSpacer** ruler to the right (*'traverse right'*) as shown above.



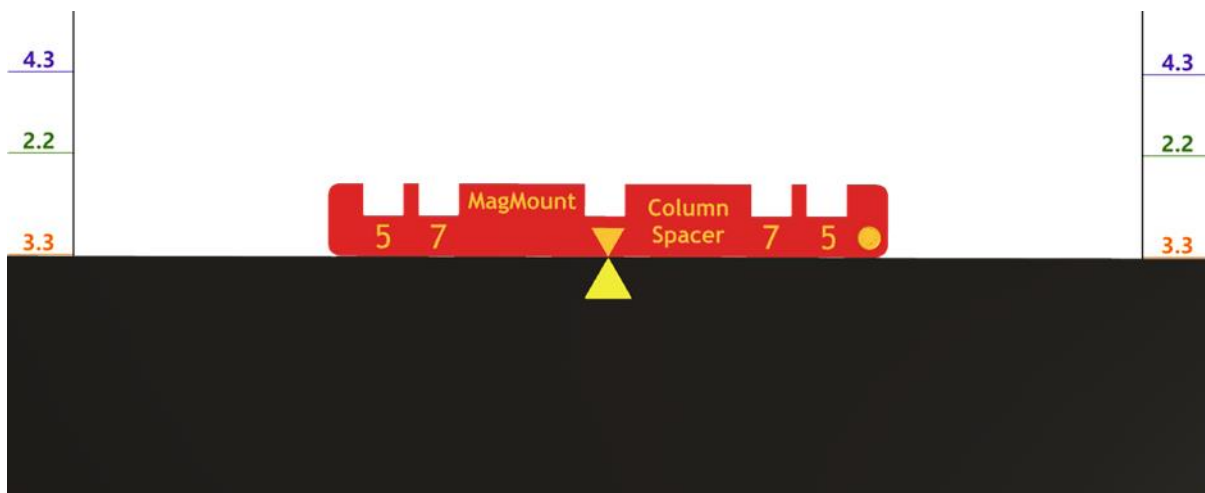
For a 3-column layout, move the **MagMount** from the central notch to the right notch marked 7, leaving the central notch empty. Be careful not to displace the **ColumnSpacer** ruler while it's momentarily in contact with just one **MagMount**.

For a 7-column layout, you should leave the central notch **MagMount** where it is and place a sixth **MagMount** in the right notch marked 7, before repeating the *'traverse right'* procedure once more to locate the position for column 7 of 7.

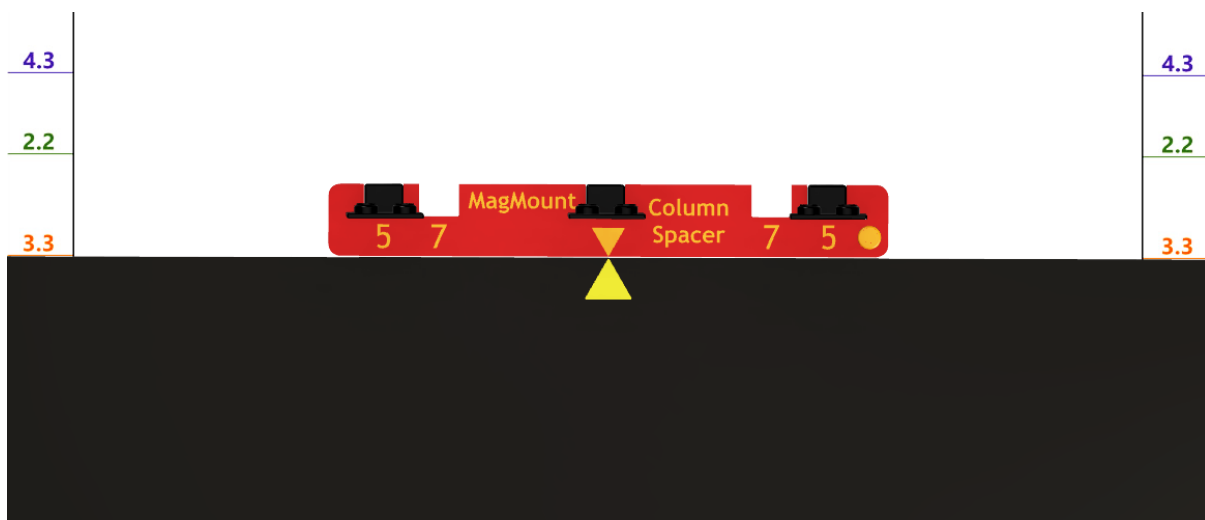
Setting out 5 columns of MagMounts

To set out 5 equidistant columns, select the 5/7 **ColumnSpacer** ruler. If you've read through the other positioning guides, the process should be familiar now. If you skipped straight to this page, you should first read pages 1 & 2, prior to following the procedure below:

Position the IKEA backboard in line with the appropriate row on the **RowSpacer** measuring tapes. In the illustration below, we're set up for the bottom row of a 3-row display.



Since there's only a need for one alignment triangle on the 5/7 **ColumnSpacer** ruler, go straight ahead and align it with the yellow **MidPoint** sticker.



Tip: Attach your minifigs before positioning the MagMounts.

Place into position, the **MagMounts** for columns 2, 3 & 4, using the centre notch and the two notches marked 5. Remove the IKEA backboard before proceeding to next step.



Taking care not to disturb the **MagMounts**, reposition the **ColumnSpacer** ruler to the left as shown above.



Position the **MagMount** for column 1 in the left hand notch marked 5.



Taking care not to disturb the **MagMounts**, reposition the **ColumnSpacer** ruler to the right as shown above.



Position the **MagMount** for column 5 in the right hand notch marked 5, then carefully remove the **ColumnSpacer** ruler to complete the row of 5 columns.

Mounting your display into the IKEA Sannahead Frame

Assuming that everything has gone to plan, you should now have your Ultimate Minifig Display ready to mount into your IKEA Sannahead frame.

At this precarious stage of the process you want to avoid accidentally dunting the metal **BackPlate** in case it disturbs the **MagMount** positioning, so please take extra care!

The safest way to go about this is to stand the IKEA Sannahead frame upright and slowly tip the metal **BackPlate** in to it. This is where a golden **PowerMag** comes in handy, so be sure to have one to hand for this final task.



Fig 1



Fig 2

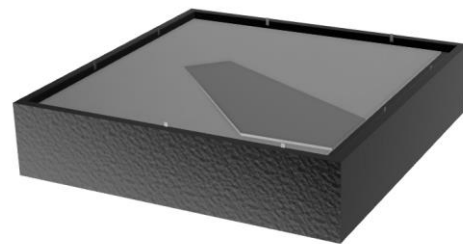


Fig 3

Position the metal **BackPlate** with only the bottom edge located, so that it's ready to tip / rotate the top edge into the IKEA Sannahead frame (*See Fig 1*). If you misaligned the bottom of the paper **BackDrop** to the bottom edge of the metal **BackPlate**, any overhang will tend to bunch up under the weight of the metal **BackPlate**, which may result in the metal **BackPlate** not seating properly into the IKEA Sannahead frame.

Before tipping, it is recommended to attach the golden **PowerMag** to the back / outside face of the metal **BackPlate** (*see Fig 2*) to serve as a handle during the final moments when there is no longer room for your fingers around the edges. This will avoid any closing 'clunk' that might disturb the **MagMounts**.

Finally, carefully lay the assembled frame face down on your work surface (*see Fig 3*), then insert the IKEA backboard before bending the IKEA Sannahead frame tabs over, securing the backboard to the outer frame.

***TIP:** Always take care to avoid bumping the display when moving or hanging on a wall. The MagMounts are secure but may displace slightly if the display frame is purposely shoogled or dunted.*